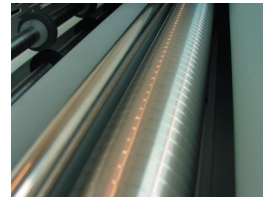
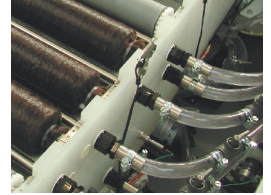
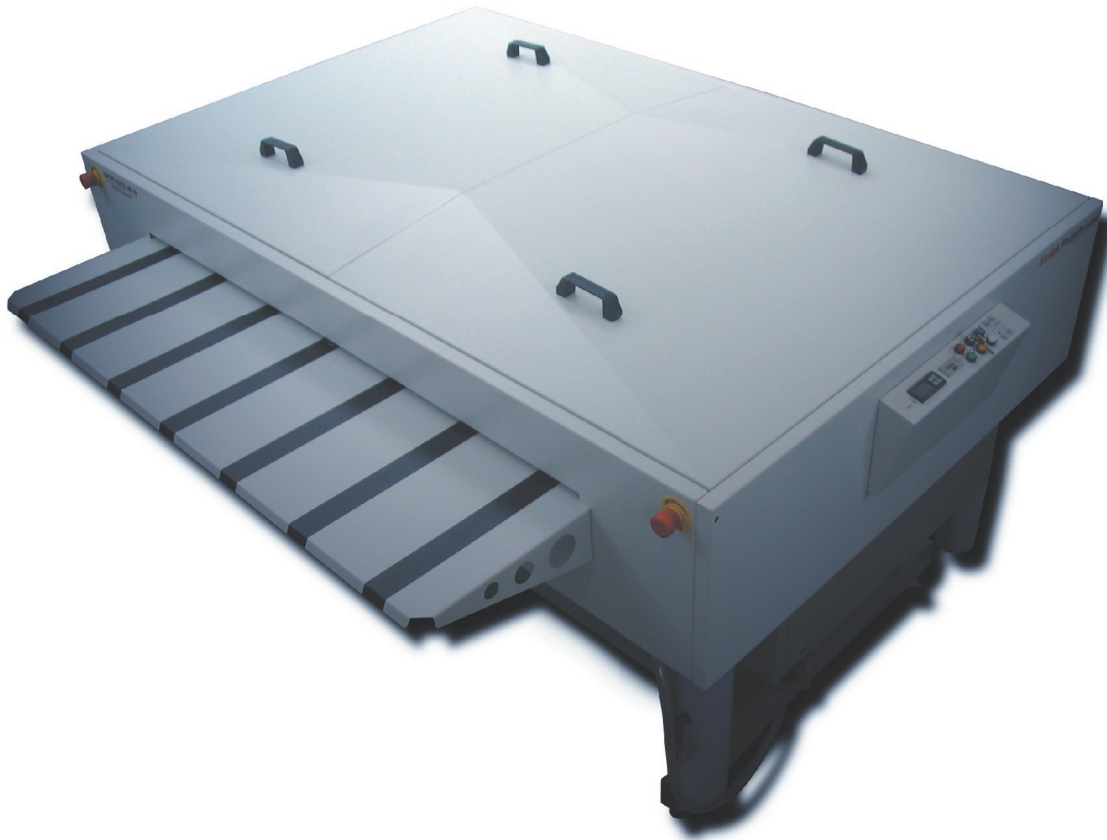


Ruby Thermal Plate Processor



Standard Equipment includes:-

- Fully automatic, developing, rinsing, finishing and drying
- Automatic and adjustable developer replenishment
- Automatic finisher, fill, recirculation and replenishment
- Adjustable speed control and developer temperature
- Cycling timer
- High Volume developer filtration
- Gum Filter
- UL Approval
- Optional Developer Chiller and water recirculation unit

NES Worldwide Ltd (UK)

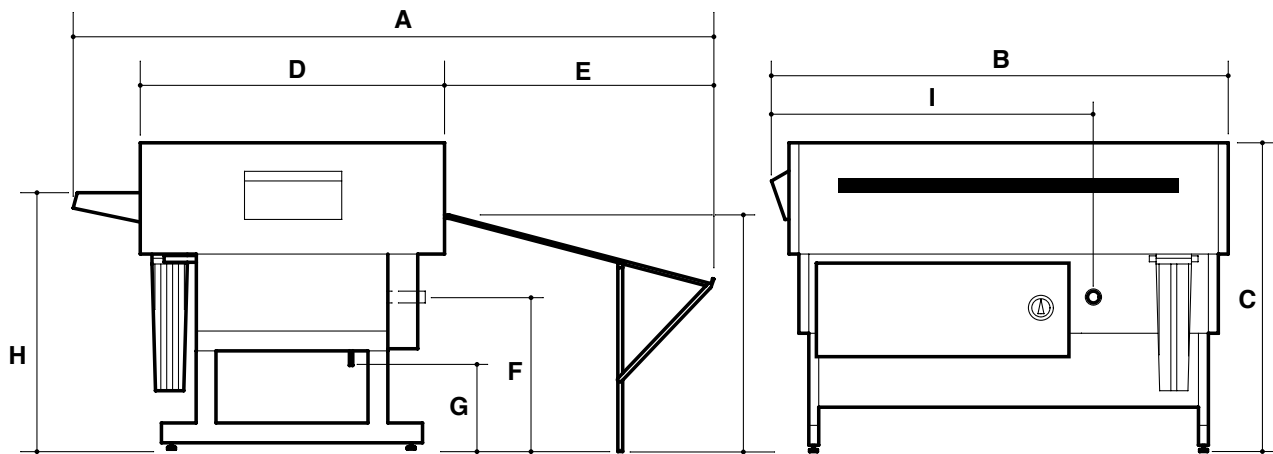
Unit 4-8 Napier Place Stephenson Way Industrial Estate
Thetford Norfolk IP24 3RL
Tel: 01842 765128 Fax: 01842 765267
e-mail: info@nesworldwide.com

NES Worldwide Inc (USA)

3, Progress Avenue
Westfield, MA 01085
Tel: 413 562 8000 Fax: 413 564 0281
e-mail: info@nesworldwide.com

Ruby Specifications

Designed to give fast, reliable and efficient inline processing of most single sided thermal plates, the NES Ruby range of processors retain the durability, high quality and ease of operation associated with all NES processing equipment.



Dimensions (mm)

| | Ruby 28 | Ruby 34 | Ruby 50 | Ruby 65 |
|---|---------|---------|---------|---------|
| A | 2306 | 2570 | 3100 | 4050 |
| B | 1359 | 1485 | 1920 | 2340 |
| C | 1055 | 1055 | 1120 | 1120 |
| D | 980 | 1080 | 1255 | 1255 |
| E | 967 | 1120 | 1484 | 2034 |
| F | 585 | 585 | 585 | 585 |
| G | 450 | 450 | 450 | 450 |
| H | 900 | 900 | 938 | 938 |
| I | 715 | 789 | 994 | 1239 |

Weight (kg) (Uncrated)

| | Ruby 28 | Ruby 34 | Ruby 50 | Ruby 65 |
|--|---------|---------|---------|---------|
| | 290 | 310 | 550 | 650 |

Plate Sizes

| | Ruby 28 | Ruby 34 | Ruby 50 | Ruby 65 |
|--------------------|-----------|-----------|------------|------------|
| Max. plate width: | 711 (28") | 864 (34") | 1270 (50") | 1650 (65") |
| Min. plate length: | 280 (11") | 356 (14") | 380 (15") | 380 (15") |

Plate Types

Single sided thermal and conventional plates.

Plate Processing Speed, Adjustable

Optional Equipment

Water recirculation unit, Developer Chiller, Plate Stacker Mechanical Interfaces

Developer

Type: As recommended by plate and chemical representative.

Capacity: **28** - 19 litres (5 US gallons)
34 - 38 litres (10 US gallons)
50 - 57 litres (15 US gallons)
65 - 70 litres (18.5 US gallons)

Overflow: To waste container.

Replenishment: Per plate – adjustable 0-180 seconds (0-200ml).
 Per hour – adjustable 0-3 minutes (0-200ml).

Temperature: 27°C ± 2°C (82°F ± 2°F) adjustable

Temperature maintained within tolerance only when used in conjunction with optional chiller unit.

Gum/Finisher

Type: As recommended by plate and chemical representative.

Capacity: **28** - 2.8 litres (0.75 US gallons)
34 - 2.8 litres (0.75 US gallons)
50 - 5.7 litres (1.5 US gallons)
65 - 7.5 litres (2 US gallons)

Replenishment: Continuous when processing.

Rinse

8 litres (2 US gallons) per minute whilst processing.

Note: Optional recirculation units are available to reduce water consumption.

Electrical Requirements

220-240 VAC single phase+PE 50/60Hz

NES Worldwide Ltd (UK)

Unit 4-8 Napier Place Stephenson Way Industrial Estate
 Thetford Norfolk IP24 3RL
 Tel: 01842 765128 Fax: 01842 765267
 e-mail: info@nesworldwide.com

NES Worldwide Inc (USA)

3, Progress Avenue
 Westfield, MA 01085
 Tel: 413 562 8000 Fax: 413 564 0281
 e-mail: info@nesworldwide.com