



Worldwide presence.
Local attention.

NES Chiller IC



NES Worldwide Inc.
3 Progress Avenue
Westfield, MA 01085

Telephone #: 413-562-8000
Fax #: 413-564-0281



NES Chiller IC

Section	Sub Section	Page
1.0	Safety and Environmental Protection Summary	3
2.0	Introduction	3
3.0	Installation Procedure	3
4.0	Adjusting Set Point	4
5.0	Maintenance	5
6.0	Dismantling/ Decommissioning Procedure	5
7.0	Spares	5

This guide covers the operation and day to day maintenance for the IC chiller unit. It has been written and illustrated using the best possible information available at the time of publication. The guide should be regarded as part of the equipment and should be kept with it throughout its working life.

Any differences between the guide and the equipment reflect improvements introduced after the publication of the guide. Any amendments received should be recorded below and incorporated in the relevant part of the guide.

Changes, technical inaccuracies and typographical errors will be corrected in subsequent revisions.

As part of our policy for continuous product development and improvement, NES Worldwide Inc. reserves the right to make changes in design and specification without notice.



NES Chiller IC

1.0 Safety and Environmental Protection Summary

All operators and customer maintenance personnel should familiarize themselves with this guide before using or servicing the equipment.

Any maintenance, servicing or adjustments must only be carried out by suitably skilled or properly instructed / supervised personnel. When self-servicing this unit incorrect performance or incorrect re-assembly can cause personal injury.

2.0 Introduction

This Water Chiller is capable of extracting 950 watts per hour with an ambient temperature of 32 Deg C. It is simple in operation and maintenance free with the exception of condenser cleaning. The Chiller operates using a shell and tube evaporator. A flexible shell eliminates the need for anti-freeze and damage caused by freeze ups. Maximum cooling is available almost immediately on start up.

3.0 Installation Procedure

1. Unpack the unit from its transportation packing and visually check for any signs of damage.
2. Attach the left hose from the chiller unit to the Chill Loop on the processor; attach the right hose from the chiller unit to the opposite side of the loop on the processor. (see fig. 1).
3. Remove the water filler cap on the top of the cooler and fill the container.
4. Check the source voltage of the outlet using a voltmeter. Only 115 volt indicated on the unit Serial No. / Rating Plate is to be connected to the Chiller. Ensure electrical outlet is dedicated (no other equipment on the same circuit breaker).



Fig. 1



NES Chiller IC

3.0 Installation Procedure (continued)

WARNING:

The equipment must be grounded.

Failure of Unit will result if operated without full reservoir.

4.0 Adjusting the Set Point

The chiller is fitted with an electronic temperature controller to maintain the chiller temperature. The controller is factory set when supplied with a processor and should not require adjustment.

If adjustment is necessary, use the following procedure:

1. Press the "set" button until current set point flashes on display (see fig. 2 & 3).
2. Press the UP or DOWN arrow key to the required set point. (see fig. 2 & 3)
3. Press the "set" button to enter new set point. (see fig. 2 & 3)



Fig. 2

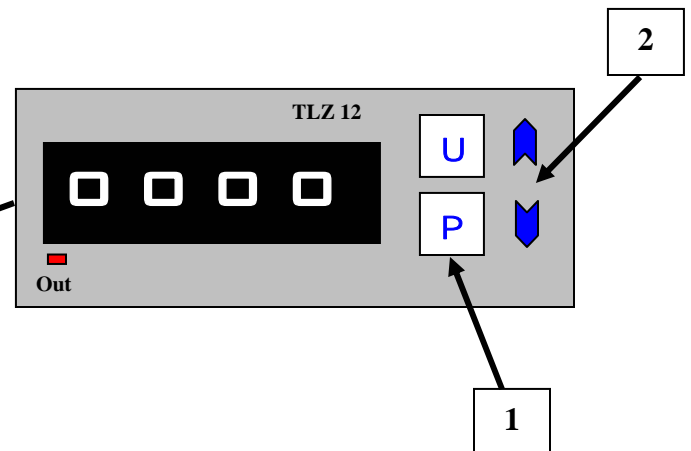


Fig. 3



NES Chiller IC

5.0 Maintenance

It is not recommended that the End User makes any adjustment or carries out any Maintenance other than:

- a. Check the mains lead and plug visually for condition.
- b. Check the unit and its pipe work for evidence of leaks.
- c. Check that the condenser grill and vents are not choked or obscured. (Monthly)

Monthly (by a competent Service/ Maintenance Engineer)

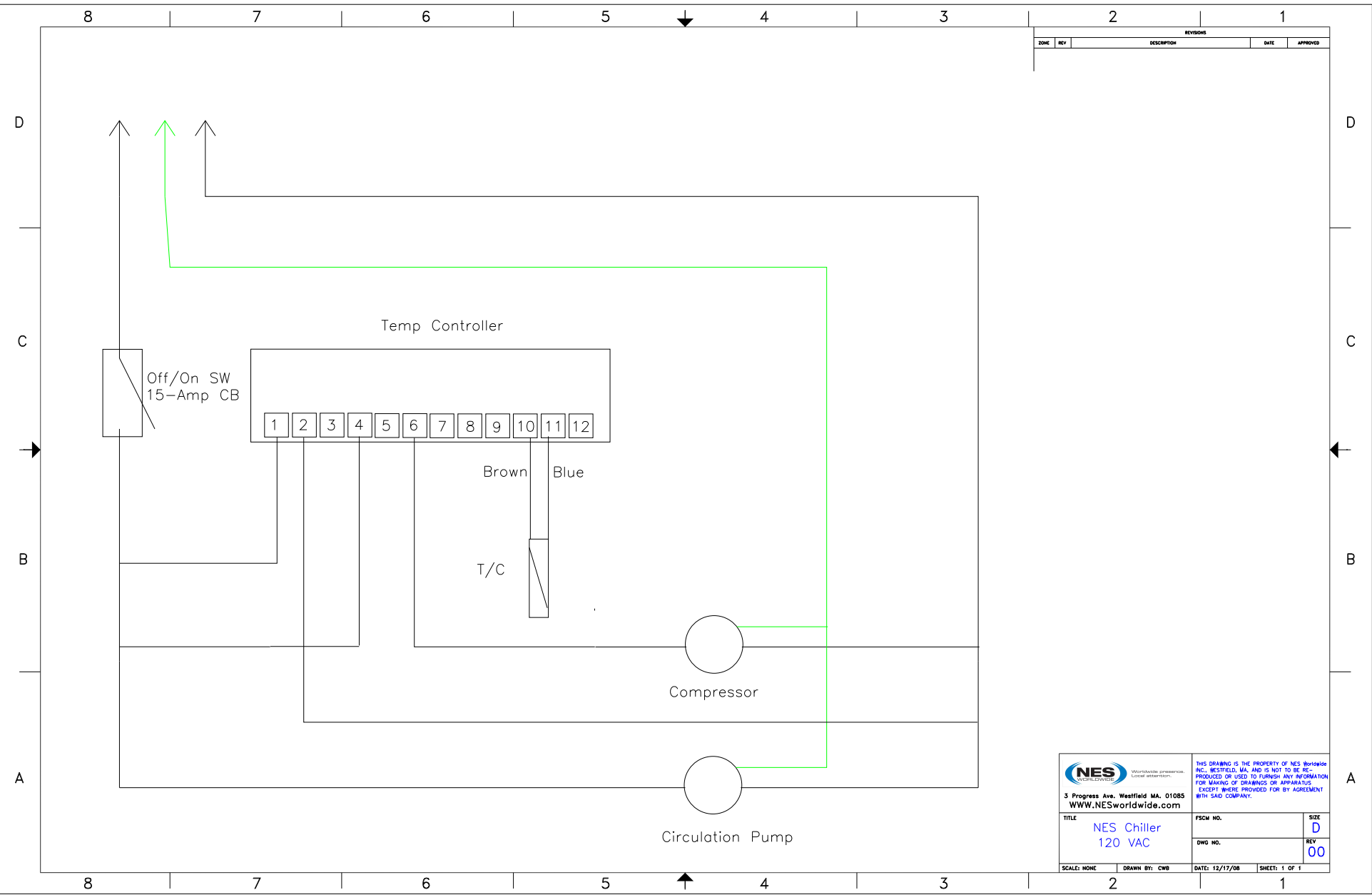
- a. Isolate unit from Main Electricity Supply.
- b. Remove any extraneous debris from the unit or its casing preferably using a vacuum cleaner or brush.
- c. Check unit for electrical safety.

6.0 Dismantling / Decommissioning Procedure

1. Switch off the chiller.
2. Switch off the unit at the main electrical supply.
3. Remove the chiller flow & return hoses.
4. Tip the chiller towards the outlets to drain water from the evaporator and pump.
5. The chiller is now ready for transportation.

7.0 Spares

Item No.	Description	Part No.
1	Chiller System	PL0219
2	Temperature Controller	EL0251
3	Controller Probe	EL0252
4	2C Circulator Pump	100040870
5	Water Tank	PL0220
6	Water Tank Cap	PL0221
7	Enclosure	EL0254
8	Electrical Cord	EL0255
9	On-Off Breaker Switch	EL0253



REVISIONS				
ZONE	REV	DESCRIPTION	DATE	APPROVED

 3 Progress Ave. Westfield MA. 01085 WWW.NESworldwide.com	THIS DRAWING IS THE PROPERTY OF NES Worldwide INC., WESTFIELD, MA AND IS NOT TO BE REPRODUCED OR USED TO FURNISH ANY INFORMATION FOR MAKING OF DRAWINGS OR APPARATUS EXCEPT WHERE PROVIDED FOR BY AGREEMENT WITH SAID COMPANY.	
	TITLE NES Chiller 120 VAC	FSCM NO. DWG NO. DATE: 12/17/08



Worldwide presence.
Local attention.

**3 Progress Ave
Westfield, MA 01085**

**Tel. 1-413-562-8000
Fax 1-413-564-0281**

WWW.NESworldwide.com