

# Chemical Conservation Unit

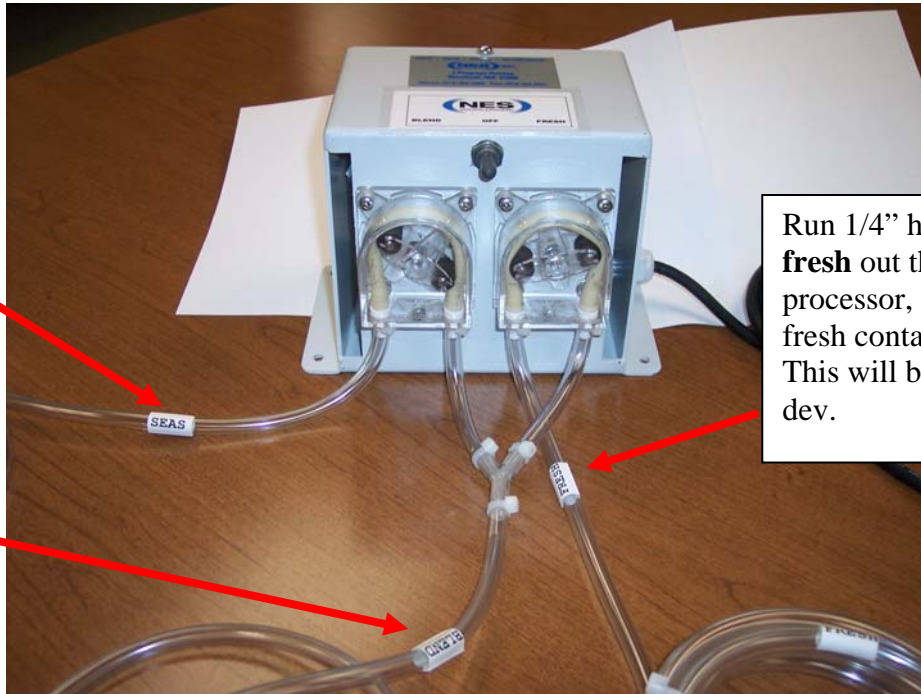
## Instructions for Quartz and MOA

### Disconnect power to machine before attempting procedure

1. Mount conservation unit on plumbing side for Quartz and inside cabinet for MOA.

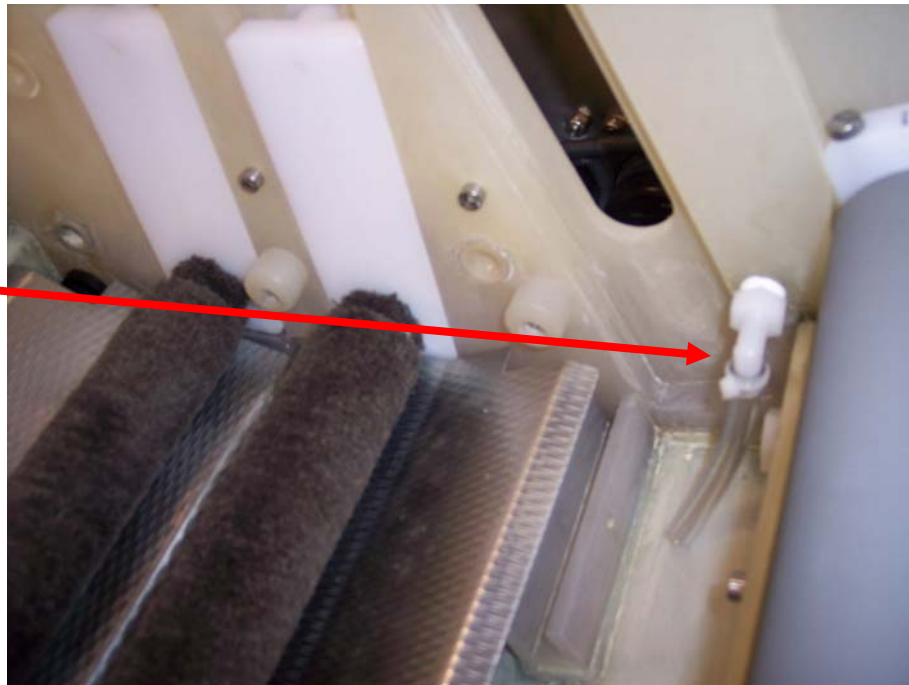
Run 1/4" hose marked **seas** (seasoned) into tank.

Connect the hose marked **blend** where the dev replen enters the tank.

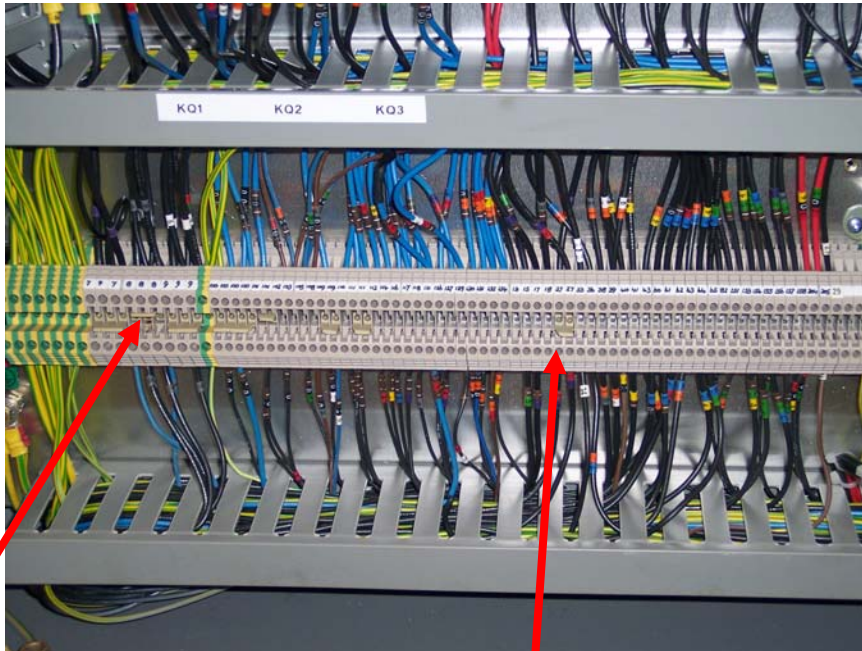


Run 1/4" hose marked **fresh** out the back of the processor, and place in a fresh container of dev. This will be used for fresh dev.

You must add a fitting into side of tank and a fitting with hose



## Quartz



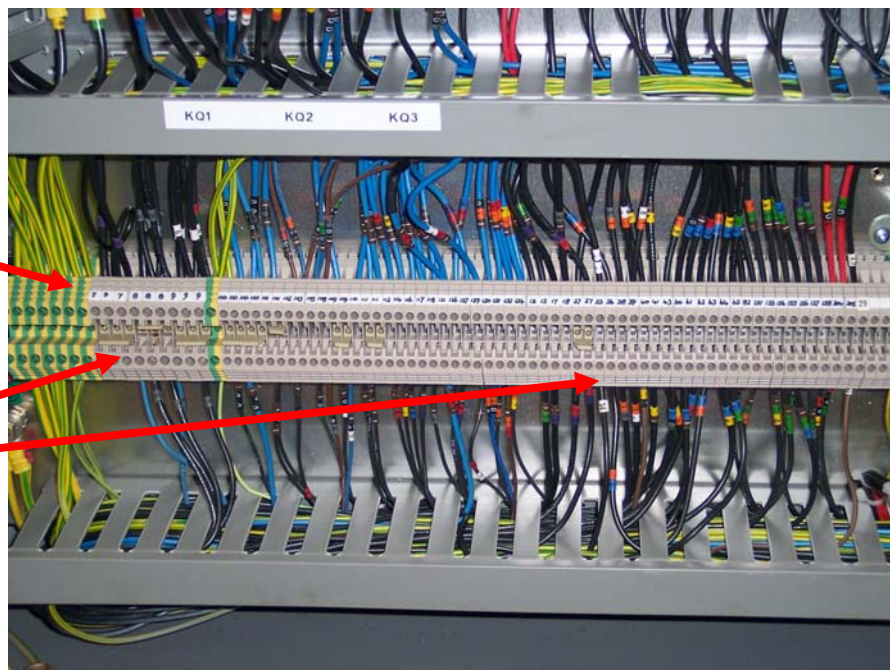
Find the other feed to the dev replen pump. Verify you have the correct wire, remove it from the terminal and insulate it.

Remove wire from terminal 33. It could be marked 33 or 34. Verify that it goes to the dev replen. Insulate wire. **Note : Verify that the diode is removed from the circuit !!!**

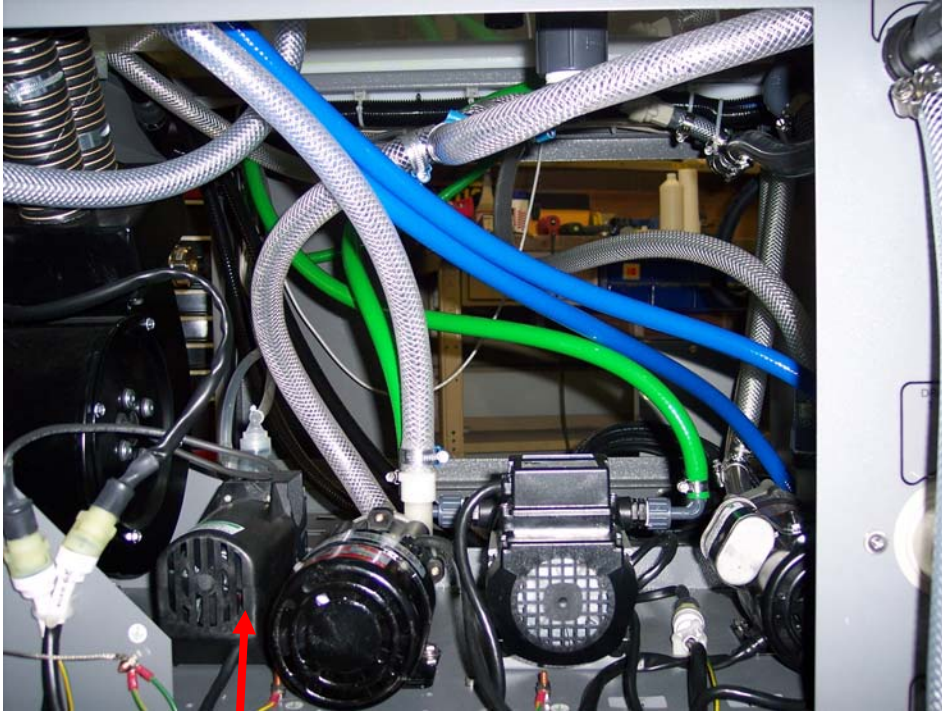
**Run electrical cord into the back of the electrical box using the strain relief supplied**

Connect the green wire to ground

Connect the black wire to terminal 33 and the white wire to 77, on 3 phase machines it should be 9.



## MOA

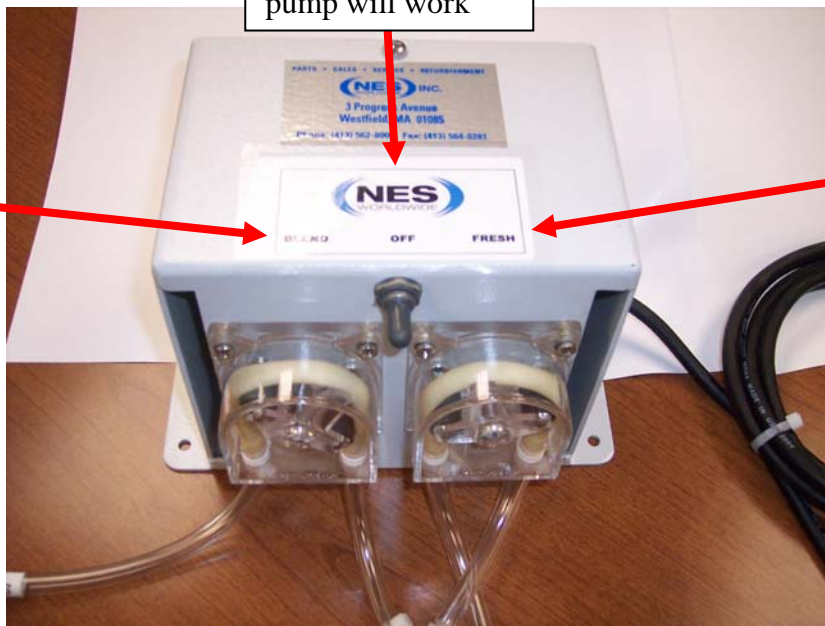


Disconnect power to dev replen pump, use the power from the dev replen to power up the CCU.

When the switch is in the OFF position neither pump will work

When the switch is in the BLEND position you will have both pumps working, fresh dev and seasoned dev.

When the switch is in the FRESH position you will only get fresh dev



After the mod is completed the dev replen timer will control the C.C.U.

With both pumps operating you will get 600 cc of liquid per minute

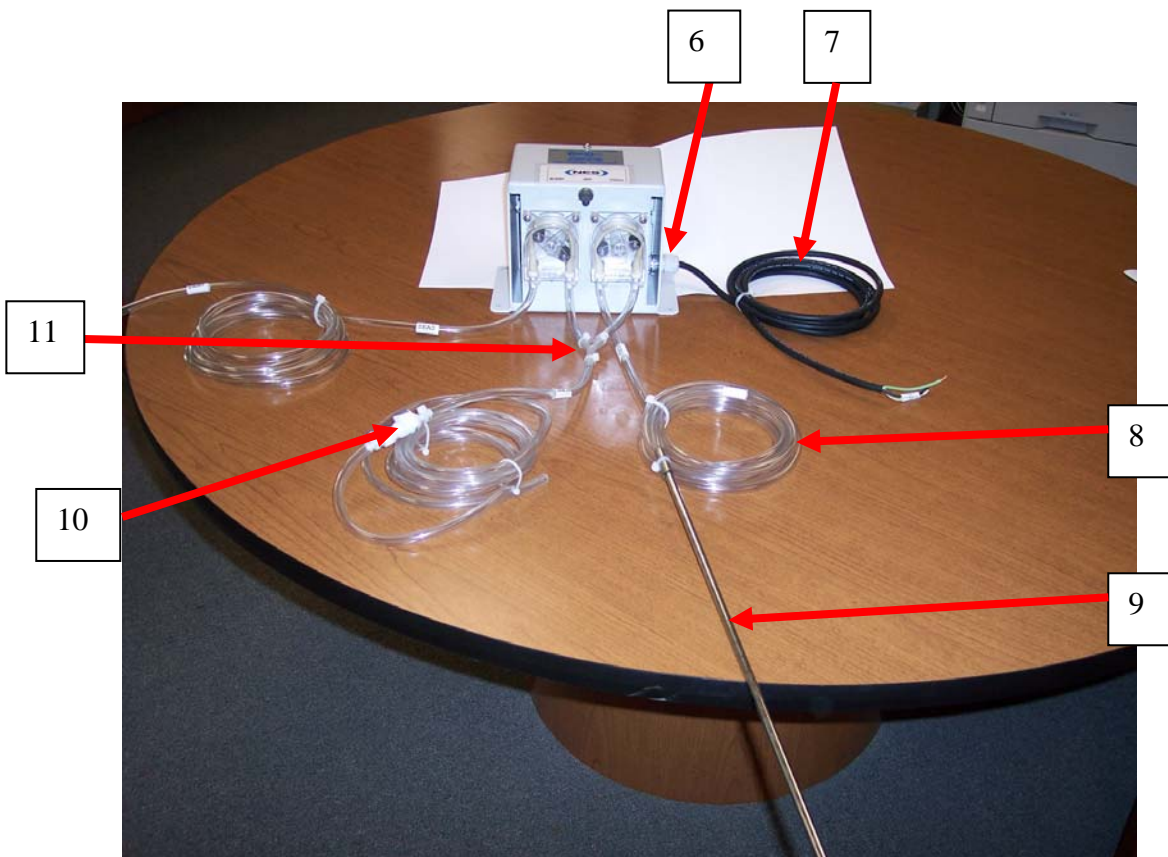
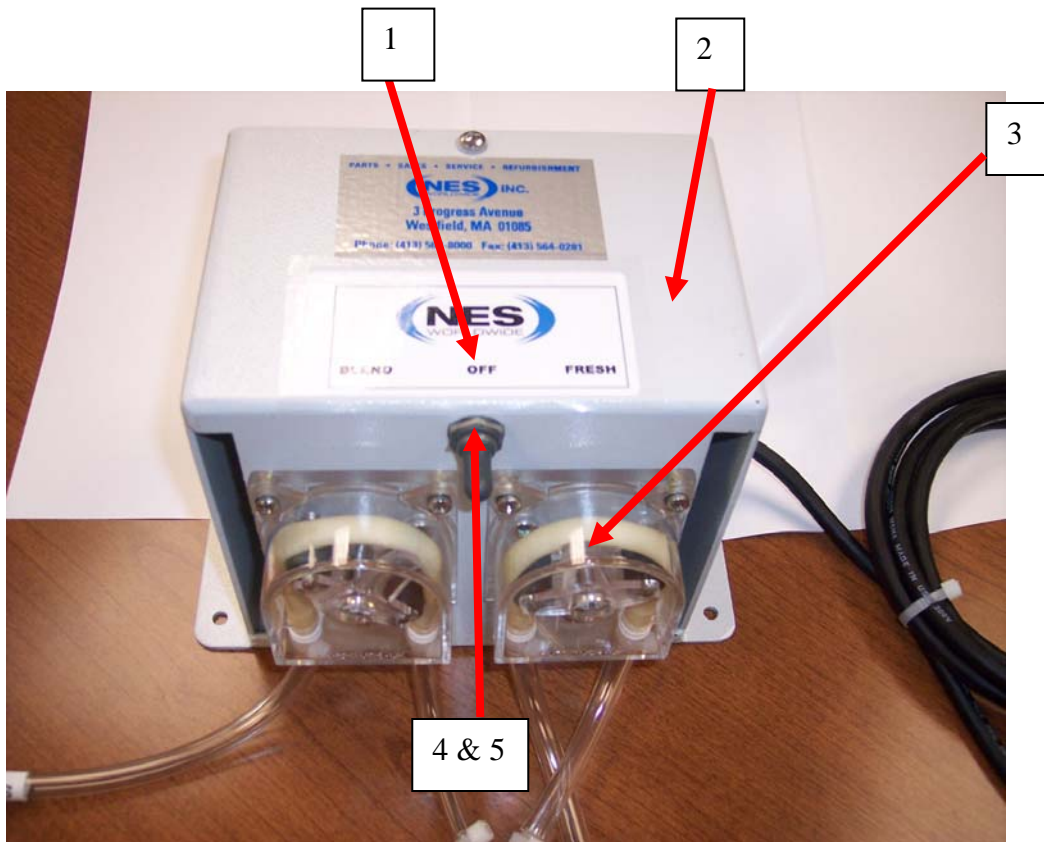
You must adjust the timer for your desired replen rate

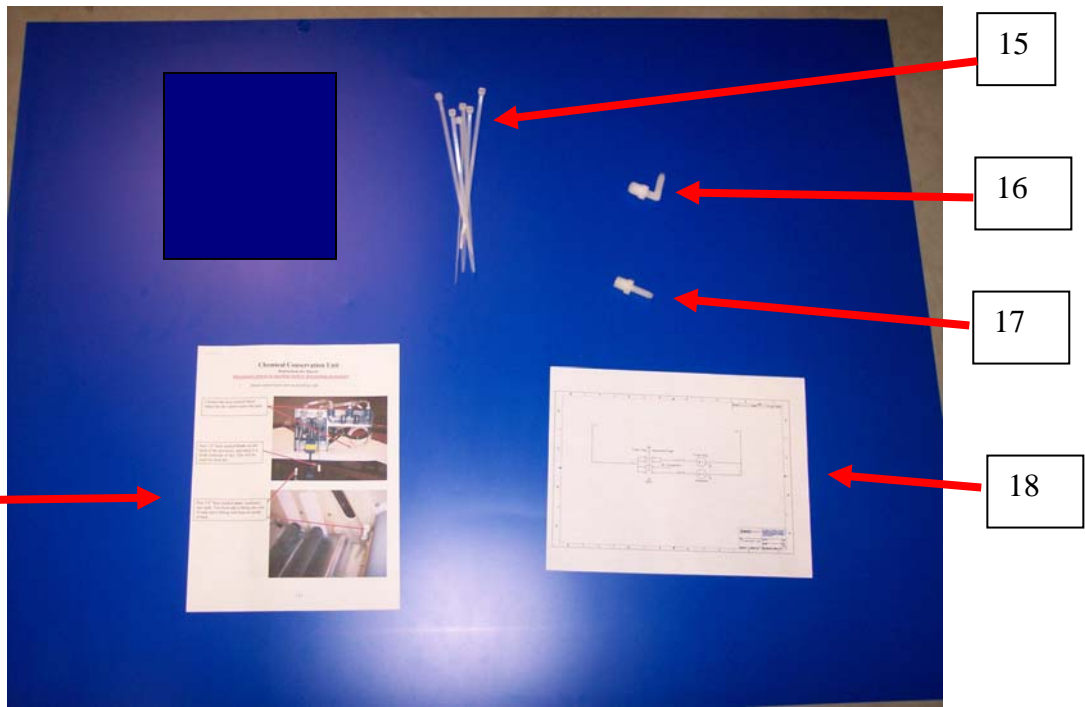
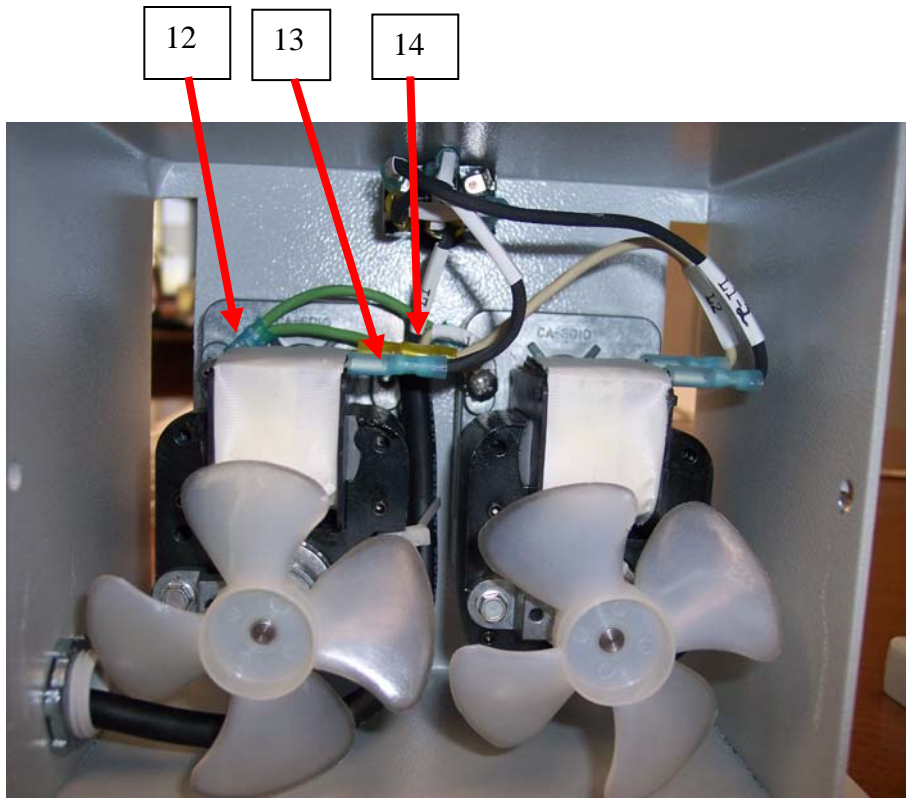
You are now ready for operation.

As always check your work before energizing machine.

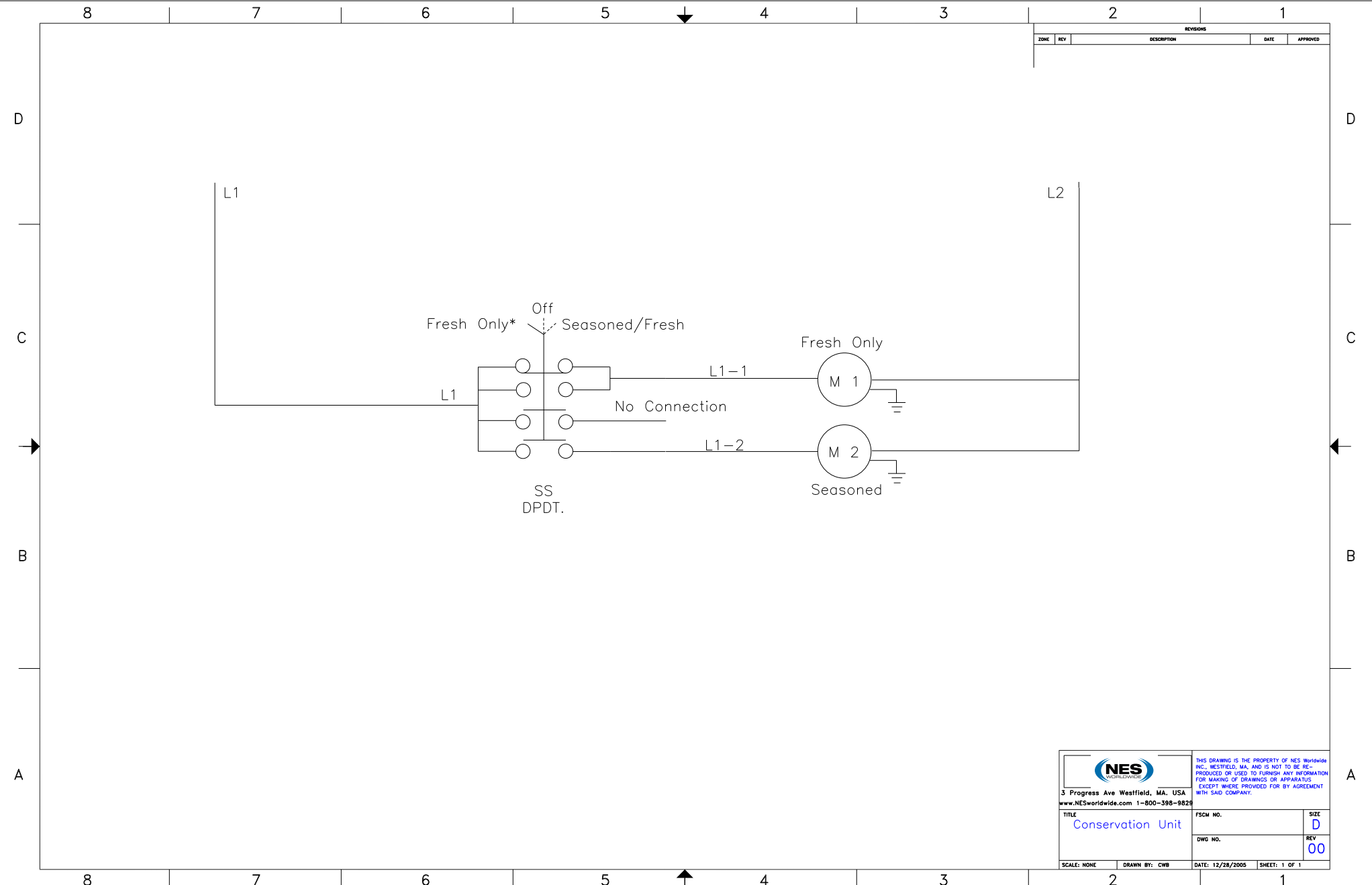
**NOTE : If you run in the FRESH position only you must adjust the dev replen timer accordingly**

# C.C.U. Parts List










REVISIONS				
ZONE	REV	DESCRIPTION	DATE	APPROVED

 3 Progress Ave Westfield, MA, USA www.NESworldwide.com 1-800-398-9828		THIS DRAWING IS THE PROPERTY OF NES Worldwide INC., WESTFIELD, MA, AND IS NOT TO BE REPRODUCED OR USED TO FURNISH ANY INFORMATION FOR MAKING OF DRAWINGS OR APPARATUS EXCEPT WHERE PROVIDED FOR BY AGREEMENT WITH SAID COMPANY.	
		TITLE <b>Conservation Unit</b>	FSCM NO. _____
DWG NO. _____	REV <b>00</b>	SCALE: NONE	DRAWN BY: CWB
DATE: 12/28/2005	SHEET: 1 OF 1		